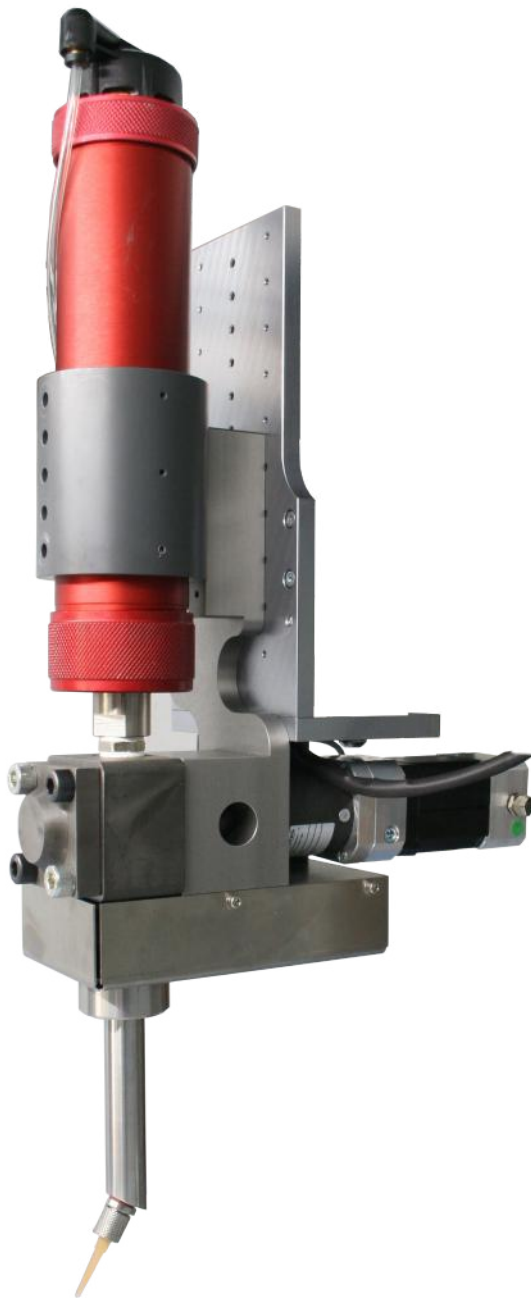


2540 Gear pump 2,32 ml (Dosing tip)



4480 Controller



9011 Container, pneumatical



9012 / 9050 Container (Tube 600 ml)



9020-9999 Magnetic-Sensor /
7002-0004 Limit-Sensor

Description

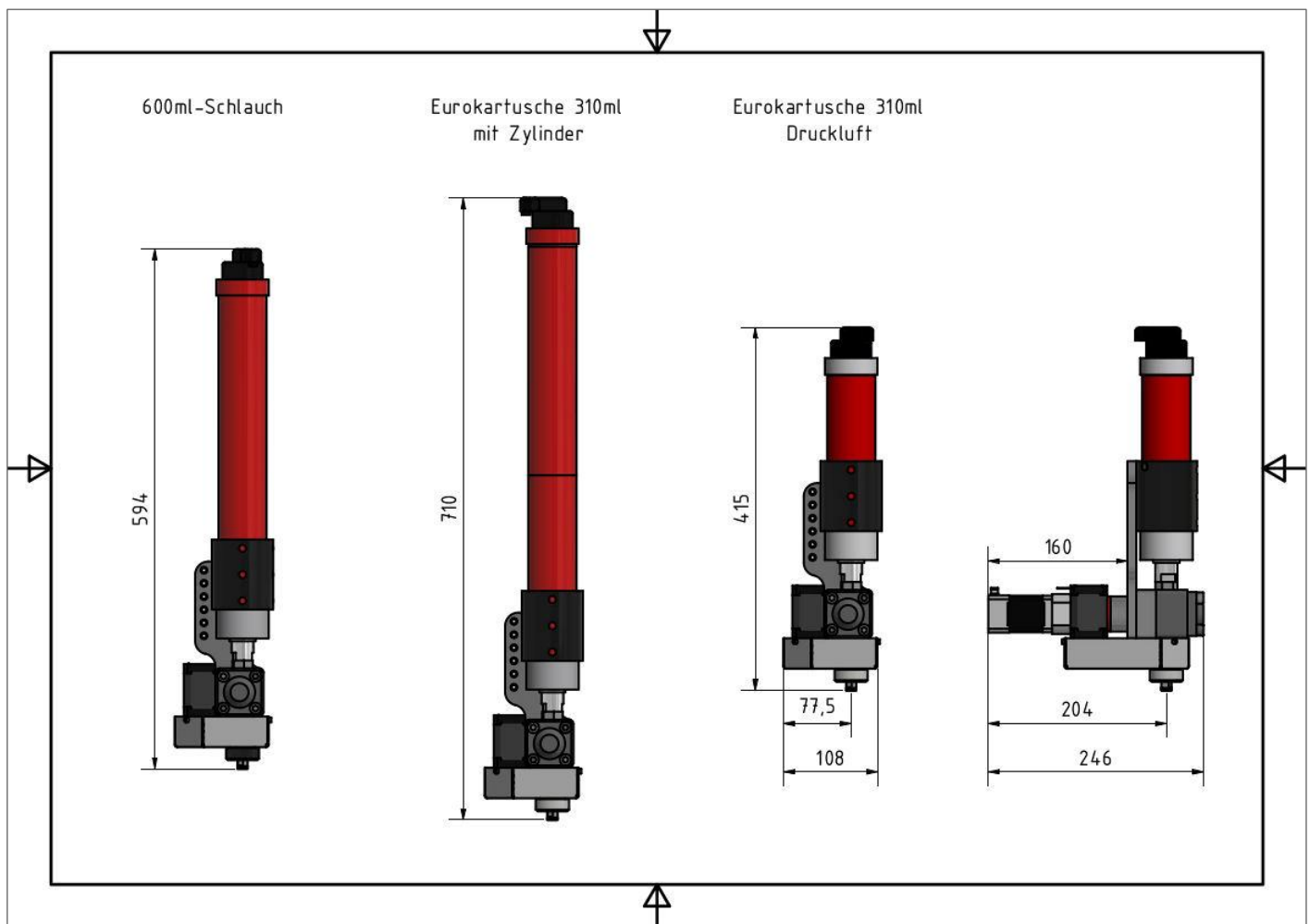
Electrical volume dosage. Dosing needle can be turned around 360°. The rotary unit is controlled as the 4th. axis and the interpolated gear pump as the 5th. axis of the dosing machine.

The amount of charging can be set. Flexible quantity setting. The dosage takes place evenly and independently of the filling quantity.

The volume-accurate dosage achieves high process reliability.

2540 Gear pump 2,32 ml (Dosing tip)

Dimensional drawing (Dimensions in mm)



Dosing volume	2,32 cm ³ / Rot.
Positioning accuracy	0,18°
Rotation speed	360° / s
Viskosität	Middle to high viscous dosing media
Max. permitted material pressure in the container	6 bar
Parameter-Programming	Machine software or controller
External Start	Via potential-free closer
Display	Volume level and signal „cartridge empty“
Process reliability	Dosage takes place evenly and independently of the filling quantity / Steady material flow