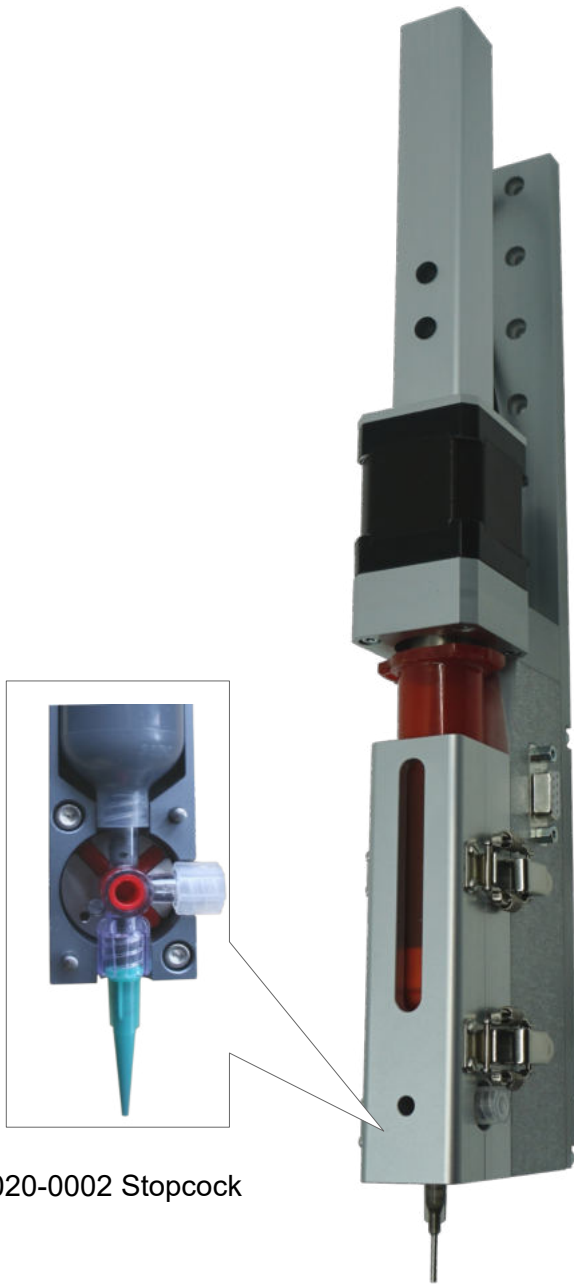


# 4027 1k Cartridge spindle 5/10/30 ml



5020-0002 Stopcock



4480 Controller



2400 Stand, small



4472 Foot switch

## Description

Electrically operated 1k dosing valve. The dispensing material is dosed directly from a material cartridge via a spindle and a stepper motor. Cartridge replacement via folding mechanism.

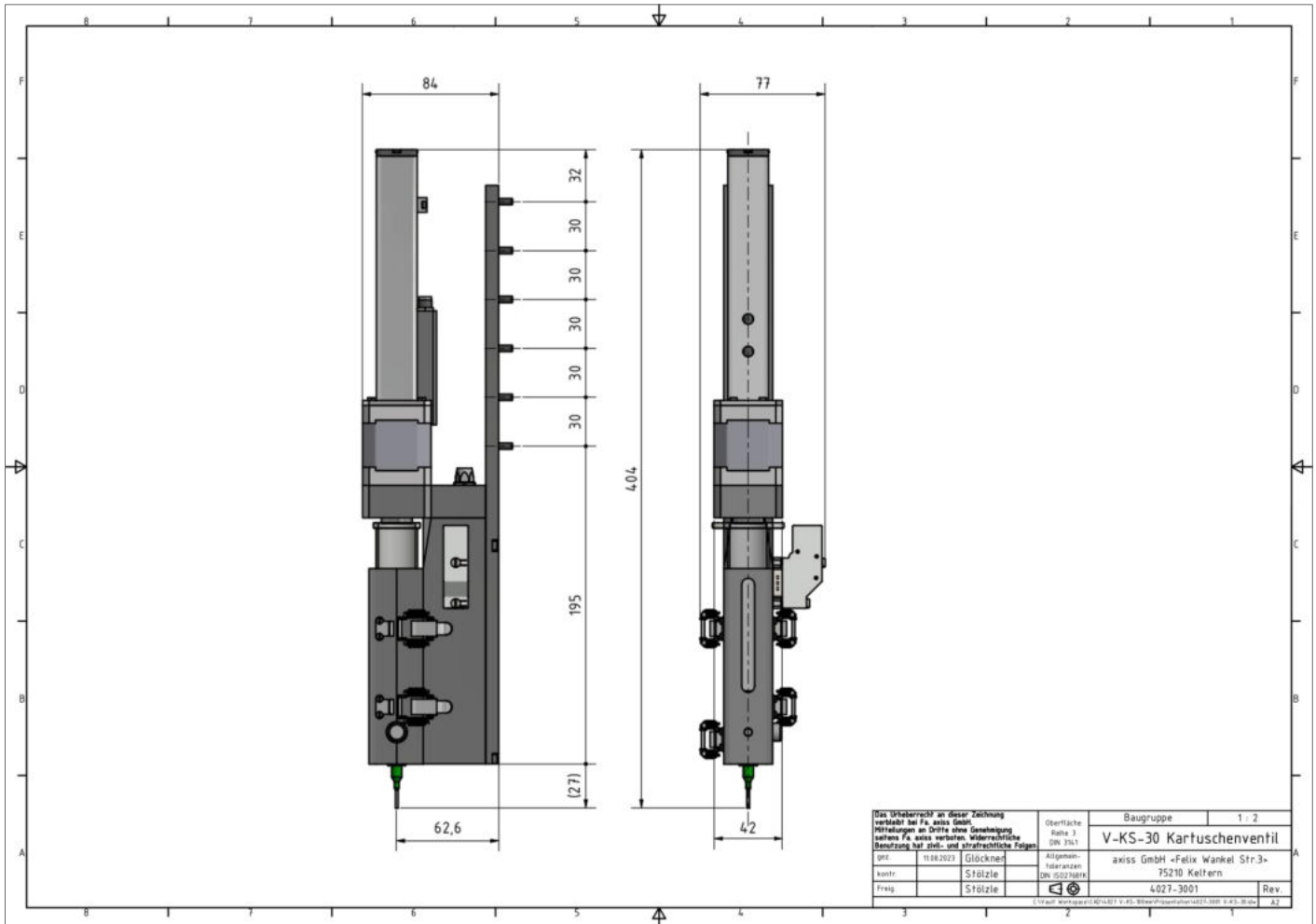
Homogeneous delivery of the dispensing quantity over the entire length of the cartridge.

A stopcock and an adjustable retract prevent the dosing medium from dripping after the dosing process.

The dosing quantity, speed and other parameters can be set via the control unit.

# 4027 1k Cartridge spindle 5/10/30 ml

Dimensional drawing (Dimensions in mm)



|                      |                                     |
|----------------------|-------------------------------------|
| Cartridge size       | 5 / 10 / 30 ml                      |
| Spindle motor ascent | 6 x 2 mm                            |
| Dosing accuracy      | +/- 0,05 ml (Material depending)    |
| Dosing volume min.   | 0,1 ml                              |
| Viscosity            | Low and middle viscous dosing media |
| Dimensions           | 404 x 77 x 84 mm                    |
| Weight               | 1 kg                                |